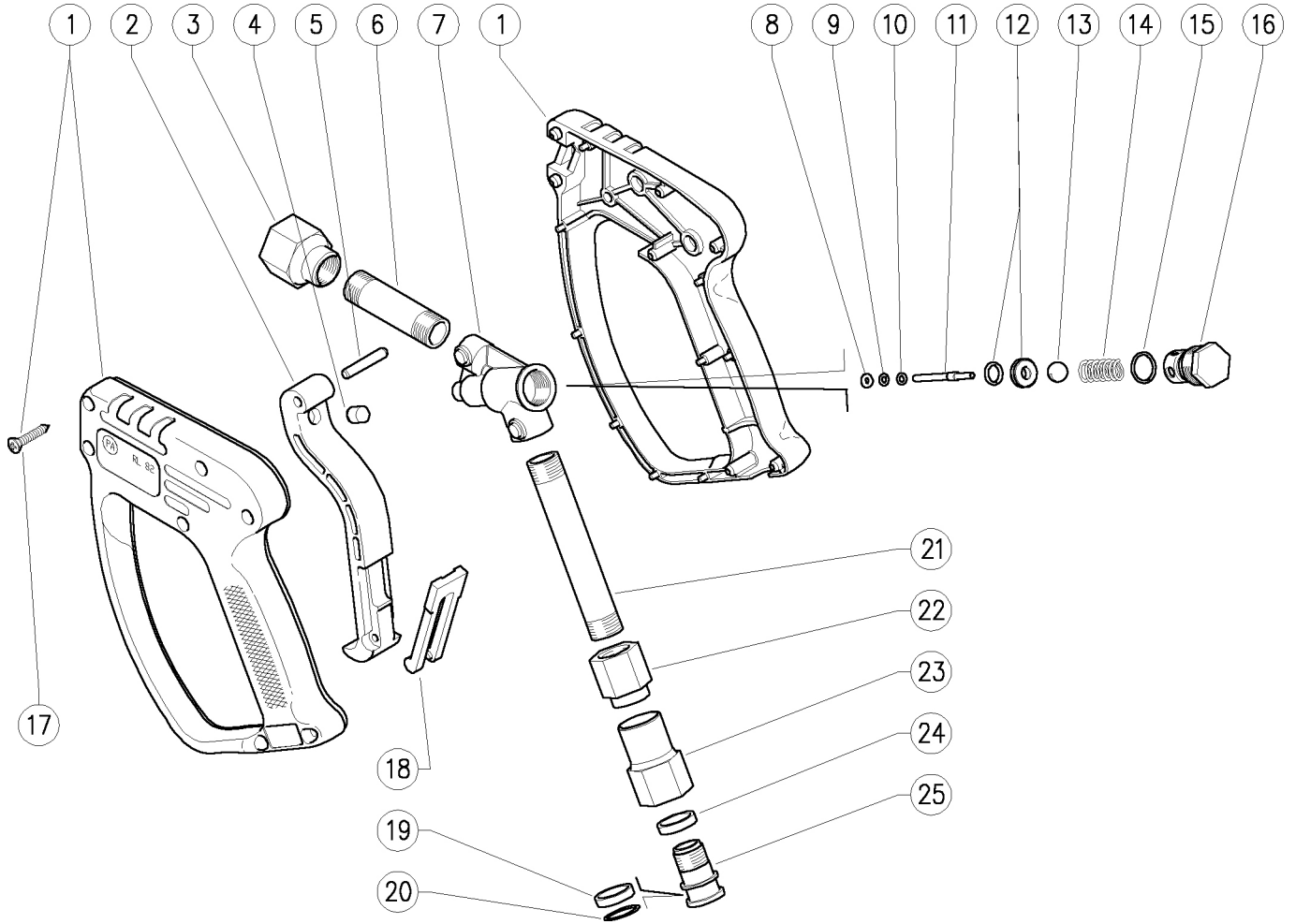


30.2800.00 RL82 sst spr.gun sw5- 1/2F-1/2F Bsp
30.2800.50 RL82 sst spr.gun sw5- 1/2F-1/2F Npt

30.2830.60 RL86 Ai 316 sst spr.gun sw5- 1/2F-1/2F Bsp



Pos.	P/N	Description	Q.ty	K1	K2	K3	K4	
1	30.2805.24	Casing-kit -RL82 +screws, Sst.	1					1
1	30.2836.24	Casing-kit -RL86 +screws, Sst. (1)	1					1
2	30.2543.84R	Blue trigger RL34-82	1					2
2	30.2506.84R	Trigger -RL31, PA black (1)	1					10
3	30.3171.51R	Coupl., M16x1F-1/2F Bsp Sst.	1					3
3	30.3176.51R	Coupl., M16x1F-1/2F Npt Sst. (2)	1					3
3	30.3171.60R	Coupl., M16x1F-1/2F Bsp- Ai316 Sst. (1)	1					3
4	30.0675.84R	Stop pin, 8x7,1mm PA	1					10
5	30.2517.31R	Parallel pin, 5x27,5 mm brass	1					10
6	30.3180.56R	Tube, M16x1 MM 57mm Sst.	1					3
6	30.3180.60R	Tube, M16x1 MM 57mm- Ai316 Sst. (1)	1					3
7	30.2804.55R	Sst.housing RL82	1					2
7	30.2804.60R	Ai316 sst.housing RL86 (1)	1					2
8	10.4018.00R	Back-up ring, 3,2x7,5x1,2 mm (1)	1	•	•			10
9	10.3165.00R	O-ring, 2,62x2,84 mm Vi 70	1	•	•			10
10	14.3511.00R	Washer, 3,2x7x0,5 mm sst.	1					10
10	14.3511.60R	Washer, 3,2x7x0,5 mm Ai316 sst. (1)	1					10
11	30.2802.51R	Sst.plunger D.4x3x L.43mm	1	•				10
11	30.2802.60R	Ai 316 sst.plunger D.4x3x L.43mm	1	•				5
12	30.2806.20R	Seat, 9mm Sst.+O-ring	1	•				10
12	30.2831.60R	Seat, 9mm Ai316 sst.	1	•				5
12	10.3059.10R	O-ring, 1,78x11,11 mm Vi 70	1	•				10

Kit	P/N	Description	Q.ty
K1	30.2905.24	Spares kit -RL34, 9(10)x1pcs.	1
K2	30.2837.24	Spares kit -RL86, 10 x1pcs.	1

Pos.	P/N	Description	Q.ty	K1	K2	K3	K4	
13	14.7461.00R	Ball, 13/32" Sst.	1	•				10
13	14.7462.00R	Ball, 13/32" ceramics	1	•				10
14	30.4108.51R	Spring, 1,6x8,8x24 mm Sst.	1					10
14	30.2832.60R	Spring, 1,8x8,7x22 mm Ai 316 sst. (1)	1					5
15	10.3060.10R	O-ring, 1,78x12,42 mm Vi 70 (1)	1	•	•			10
16	30.2803.51R	Sst. plug M18	1					3
16	30.2803.60R	Ai 316 sst. plug M18 (1)	1					3
17	16.3075.51R	S/tapping scr. 3,5x18 mm sst.	7					10
18	30.1515.84R	Safety latch, PA blue	1					10
19	26.1075.85R	Bushing, open 15,5x19x4mm	1	•	•			10
20	10.3092.10R	O-ring, 2x15 mm Vi 70	1	•	•			10
21	30.3173.56R	Tube, M16x1 MM 96mm Sst.	1					5
21	30.3173.60R	Tube, M16x1 MM 96mm Ai 316 sst. (1)	1					5
22	30.3181.51R	Coupl., M16x1F-M15x1F Sst.	1					3
22	30.3181.60R	Coupl., M16x1F-M15x1F Ai 316 sst. (1)	1					3
23	30.3182.51R	Coupl., 1/2F Bsp Sst.	1					3
23	30.3182.51R	Coupl., 1/2F Npt Sst. (2)	1					3
23	30.3182.60R	Coupl., 1/2F Bsp Ai 316 sst. (1)	1					3
24	26.1074.85R	Bushing, 15,5x19x4 mm PTFE (1)	1	•	•			10
25	26.1072.51R	Pin, M15x1-19 mm Sst.	1					5
25	26.1072.60R	Pin, M15x1-19 mm Aisi 316 Sst. (1)	1					5

(1) 30.2830.60 (2) 30.2800.50