



CENTRIFUGAL PUMPS IN CONFORMANCE WITH DIN 24255 FOR USE IN THE CIVIL, AGRICULTURAL AND INDUSTRIAL FIELDS

The CM series is made up of single stage electric monobloc pumps with a flanged hydraulics/motor connection. The pump casing is manufactured in accordance with the provisions of DIN 24255-NF E 44 III-UNI 7467 standards, regarding hydraulic dimensions and connection points.

The pumps may be installed in all positions, except where the suction point is directed downwards. The design of these machines allows the rotating parts and the motor to be removed from the pump casing without having to disconnect the pipes. Thus any maintenance is easily and quickly performed.

STANDARD DESIGN FEATURES

- Cast iron pump casing GG20
- Cast iron motor bracket GG20
- Cast iron impeller (bronze on request)
- Stainless steel shaft pump AISI 304 or 303
- Mechanical seal with ceramic/graphite counterfaces
- Flanged connection points DN 32 - DN 80 as per UNI 2236 PN10 standards
- Threaded type counterflanges as per UNI 2254 standards

MOTOR

- Type: induction, enclosed, self-ventilated
- Design: B5
- Use: continuous
- Insulation: Class F
- Level of protection: IP 55 Terminal Box
IP 44 complete motor
- Number of poles: 2
- Speed of rotation 2900 rpm

USAGE LIMITATIONS

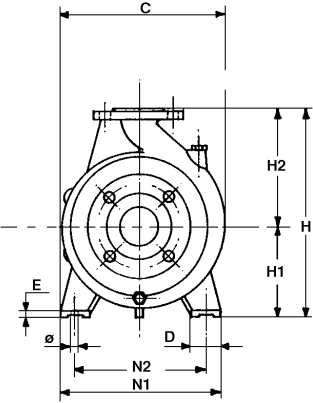
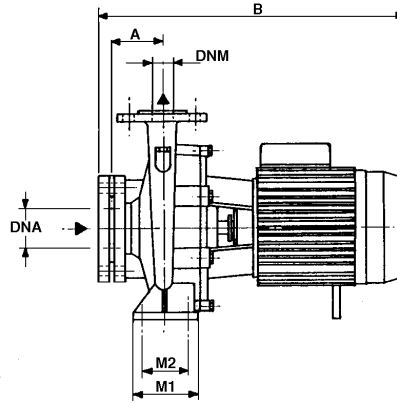
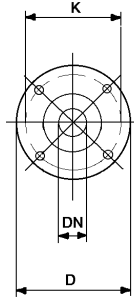
- Type of liquid: non-aggressive, non-explosive, free from solid particles and fibres.
- Hot water for heating
 - Coolants (not containing mineral oils) for air-conditioning systems
 - Pumped liquid temperature from -10° C to 90° C
 - Environmental temperature up to 40° C
 - Maximum operating pressure 10 bar

APPLICATIONS

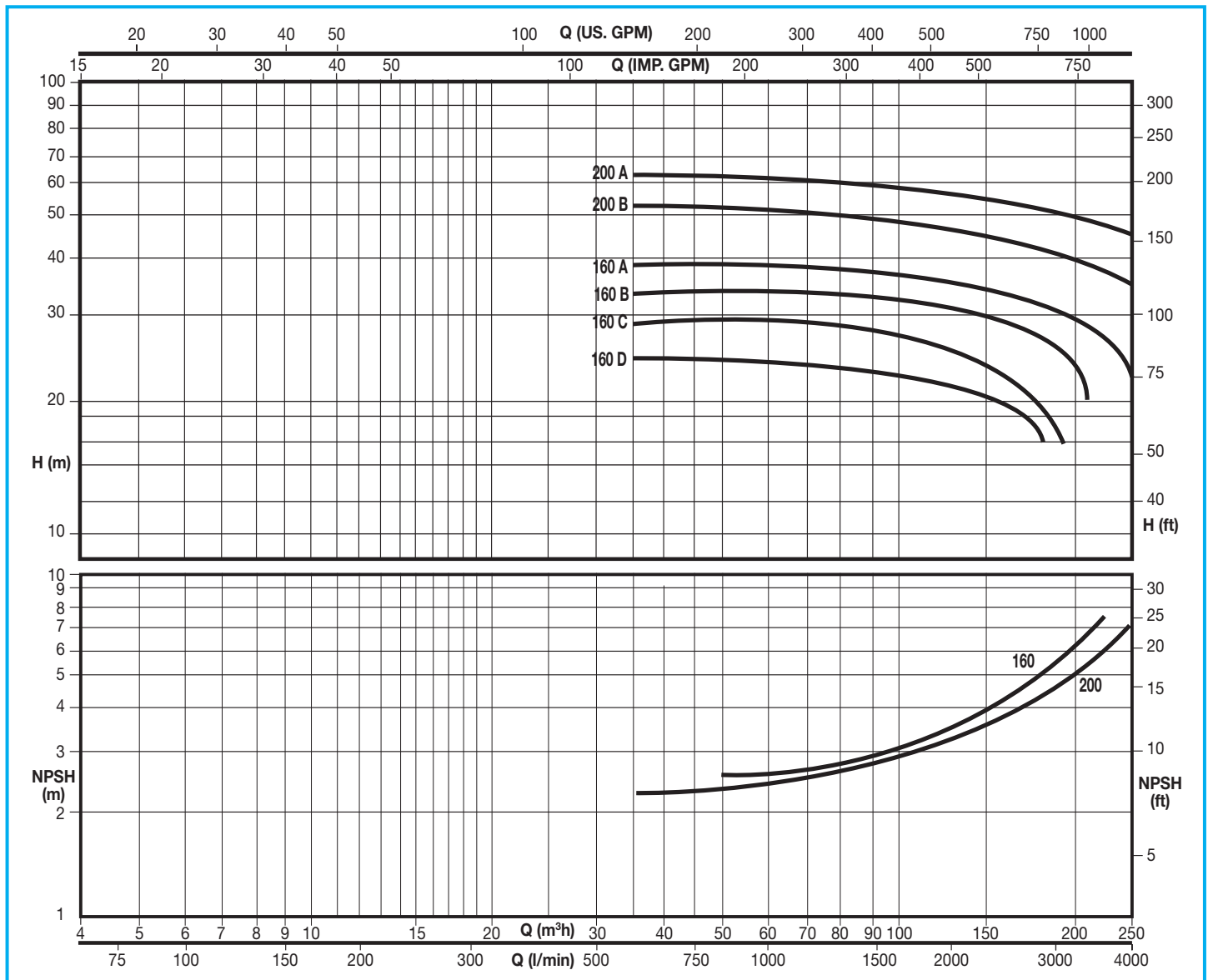
- Agricultural: overhead or surface irrigation water supply
- Civil: autoclave supply, pressure elevation, heating and air-conditioning systems, water supply and firefighting systems
- Industrial: liquid transfer in general

CM DIN 24255

DIMENSIONS (mm)				
DN	D	K	Holes	
			n°	Dia.
32	140	100	4	18
40	150	110	4	18
50	165	125	4	18
65	185	145	4	18
80	200	160	4	18
100	220	180	8	18



Model	Dimensions mm															Weight kg															
	DNM	DNA	A	H ₁	H ₂	M ₁	M ₂	N ₁	N ₂	D	E	Ø	B	C	H																
CM 32/160	C	B	A	80	132	160	100	70	240	190	50	12	14	490	240	292	38														
					CM 32/200	C											B	A	160	180	505	268	340	39							
																								42							
CM 32/250	C	B	A	100	180	225	125	95	320	250	65	14	625	305	405	52															
																CM 32/200	C	B	A	160	180	565	268	340	63						
																									69						
CM 32/250	C	B	A	100	180	225	125	95	320	250	65	14	625	305	405	83															
																CM 32/200	C	B	A	160	180	565	268	340	90						
																									120						
CM 40/125	C	B	A	80	112	140	100	70	210	160	50	12	14	495	220	252	36														
					CM 40/160	C											B	A	132	160	240	190	500	245	292	37					
																										40					
CM 40/160	C	B	A	100	160	180	125	95	265	212	65	15	14	590	273	340	47														
																	CM 40/200	C	B	A	132	160	240	190	500	245	292	50			
																												65			
CM 40/200	C	B	A	100	160	180	125	95	320	250	65	15	14	630	322	405	71														
																	CM 40/250	C	B	A	160	180	265	212	590	273	340	91			
																												121			
CM 40/250	C	B	A	100	180	225	125	95	320	250	65	14	14	700	322	405	91														
																	CM 40/125	C	B	A	132	160	240	190	500	245	292	121			
																												121			
CM 50/125	B	A	100	132	160	100	70	240	190	50	12	14	525	250	292	47															
																CM 50/160	B	A	150	180	265	212	590	270	340	50					
																										65					
CM 50/160	B	A	100	150	180	100	70	265	212	50	12	14	635	290	360	71															
																CM 50/200	B	A	160	200	705	332	405	82							
																								89							
CM 50/200	C	B	A	100	160	200	125	95	320	250	65	14	705	332	405	122															
																CM 50/250	C	B	A	180	225	125	95	320	250	65	14	750	332	405	125
																															140
CM 50/250	C	B	A	100	180	225	125	95	320	250	65	14	750	332	405	140															
																CM 50/125	C	B	A	132	160	240	190	500	245	292	149				
																											149				
CM 65/125	B	A	100	160	180	125	95	280	212	65	14	14	605	280	340	64															
																CM 65/160	B	A	160	200	320	250	665	330	405	70					
																										70					
CM 65/160	C	B	A	100	160	200	125	95	280	212	65	14	635	290	360	84															
																CM 65/200	C	B	A	180	225	320	250	705	330	405	90				
																											120				
CM 65/200	C	B	A	100	180	225	125	95	320	250	65	14	705	330	405	122															
																CM 65/250	C	B	A	160	200	360	280	80	16	19	850	370	450	138	
																														148	
CM 65/250	C	B	A	100	180	225	125	95	360	280	80	16	19	850	370	450	239														
																	CM 65/125	C	B	A	160	200	360	280	80	16	19	850	370	450	253
																															253
CM 80/160	D	C	B	80	100	125	180	225	125	95	320	250	65	14	14	330	405	99													
																		CM 80/200	D	C	B	160	200	320	250	665	330	405	129		
																													143		
CM 80/200	D	C	B	80	100	125	180	225	125	95	320	250	65	14	14	330	405	152													
																		CM 80/160	D	C	B	160	200	320	250	665	330	405	233		
																													247		
CM 80/200	D	C	B	80	100	125	180	225	125	95	345	280	65	16	14	330	405	233													
																		CM 80/160	D	C	B	160	200	320	250	665	330	405	247		
																													247		



CODE	MODEL	Motor Power		VOLTAGE	Amp. 3 x 400 V	Q	Discharge head in meters							PRICE	
		HP	kW				0	1200	1600	2000	2600	3000	3500		
D5780KKK	CM 80/160 D	15	11	3 ~ 400 ÷ 690 V	20,8	L/1' / m³/h	0	72	96	120	156	180	210		
D5781KKK	CM 80/160 C	20	15	3 ~ 400 ÷ 690 V	25,8		0	72	96	120	156	180	210		
D5782KKK	CM 80/160 B	25	18,5	3 ~ 400 ÷ 690 V	35		0	72	96	120	156	180	210		
D5783KKK	CM 80/160 A	30	22	3 ~ 400 ÷ 690 V	42		0	72	96	120	156	180	210		
D5786KKK	CM 80/200 B	40	30	3 ~ 400 ÷ 690 V	63,5		0	72	96	120	156	180	210		
D5787KKK	CM 80/200 A	50	37	3 ~ 400 ÷ 690 V	74,5		0	72	96	120	156	180	210		